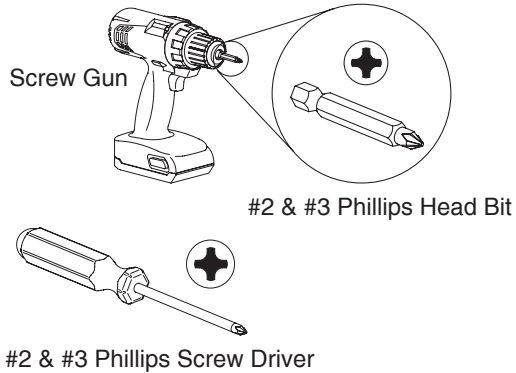
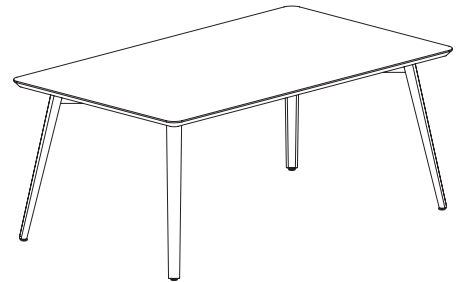


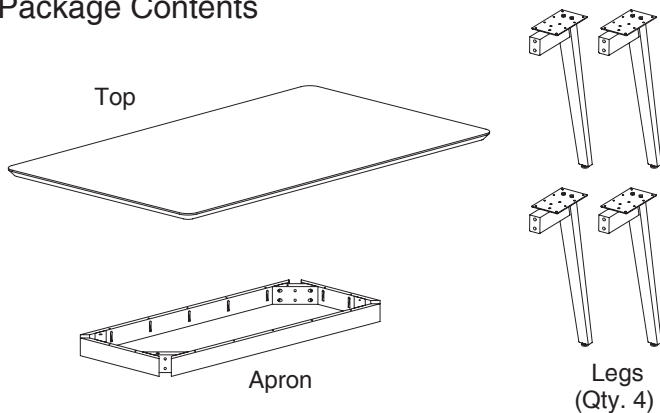
## Recommended Tools



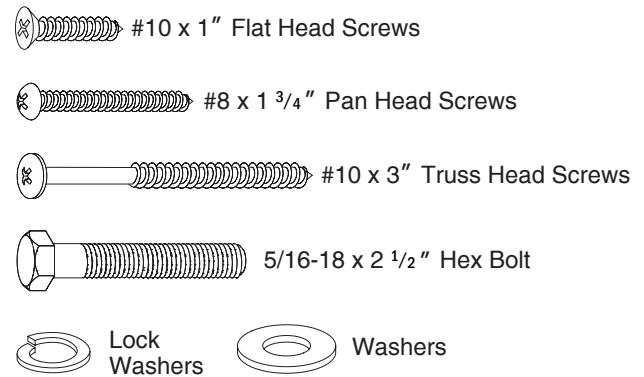
## Wood Table Assembly



## Package Contents



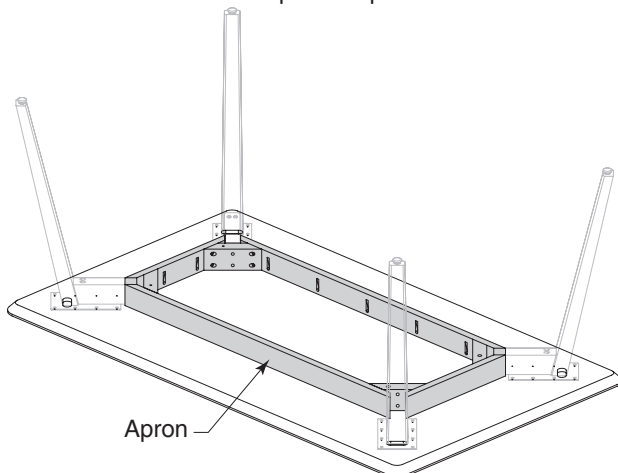
## Hardware Used



## Step 1

### Position Apron in Place on Top

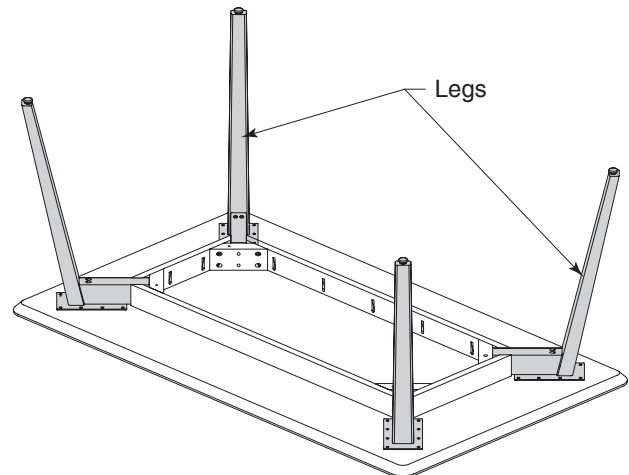
- Flip top upside down and lay on a flat smooth surface.
- Position Apron in the center of the Top as shown.
- DO NOT fasten to the Top at this point.



## Step 2

### Position Legs in Place

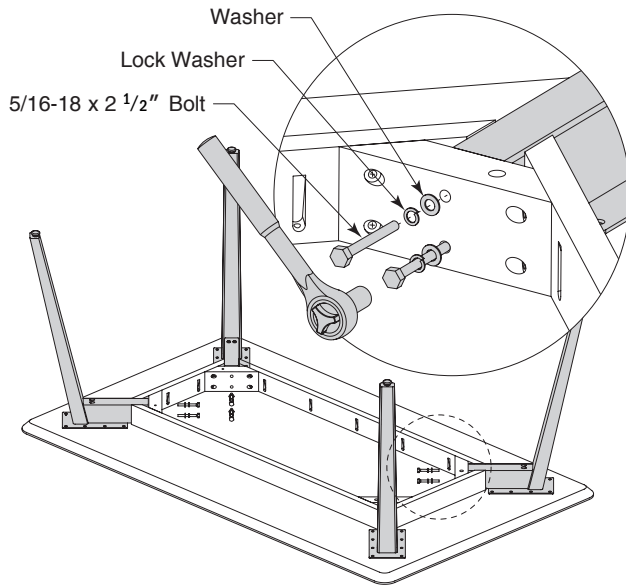
- Slide all Legs into corners of apron. Bolt heads on Legs will fit into cutouts and rest flush onto the Top as shown.



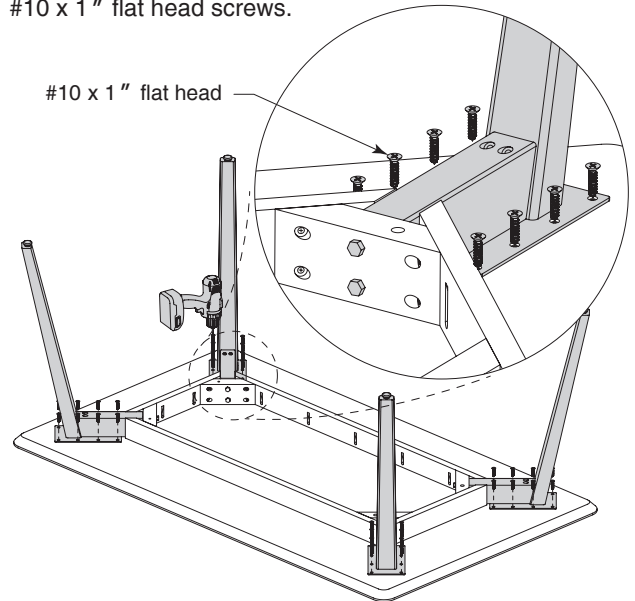
**Notice To Installers:** Failure to comply with installation instructions will compromise the safety, durability and performance of this product, which may risk injury to the user of this product and/or diminish the product life cycle. Jasper Group assumes no liability in these instances.

**Step 3****Fasten Legs to Apron**

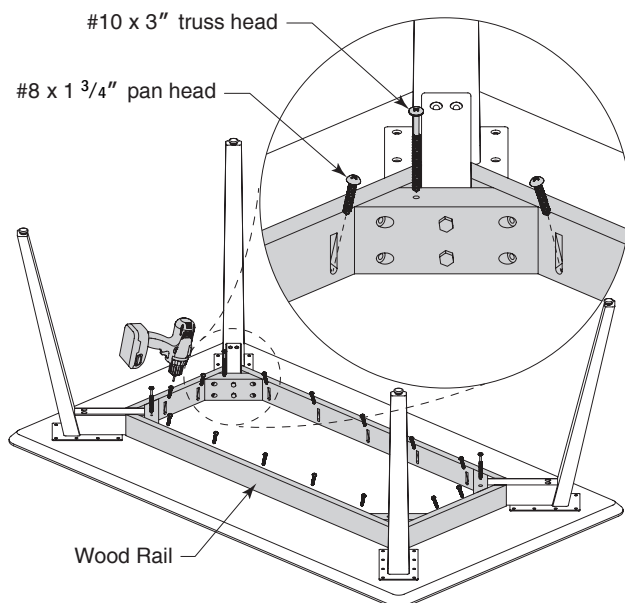
- Fasten Legs to Apron using #5/16-18 x 2 1/2" Bolts. Each bolt gets (1) washer and (1) lock washer as shown below.

**Step 4****Fasten Legs to Top****Wood Table Assembly (continued)**

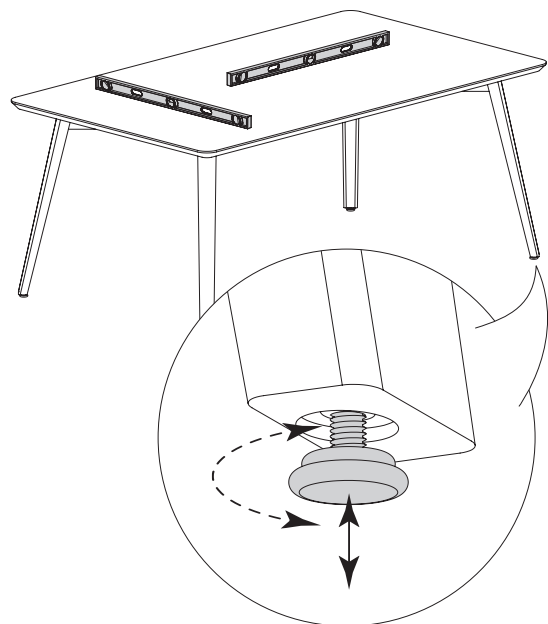
- Align holes in leg plates to pre-bored holes in Top.
- Fasten all four Legs to Top using #10 x 1" flat head screws.

**Step 5****Fasten Apron to Top**

- Attach Apron to Top using #8 x 1 3/4" pan head screws.
- Use a #10 x 3" truss head screw thru each corner block as shown.

**Step 6****Level Table**

- Carefully flip table upright.
- Level table front-to-back and side-to-side by rotating adjustable glides.



**Notice To Installers:** Failure to comply with installation instructions will compromise the safety, durability and performance of this product, which may risk injury to the user of this product and/or diminish the product life cycle. Jasper Group assumes no liability in these instances.