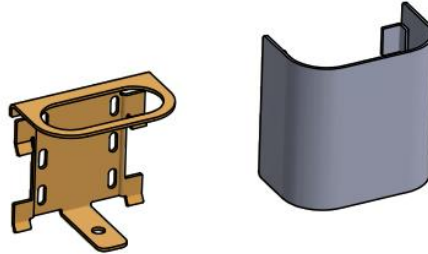


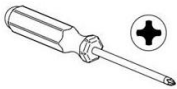
# CAAV

## SIDE MOUNT POWER INSTALL

Components for EC47 Power Unit shown  
Attachment Bracket shown in different  
color to be easily identified.



### Recommended tools



### Hardware enclosed

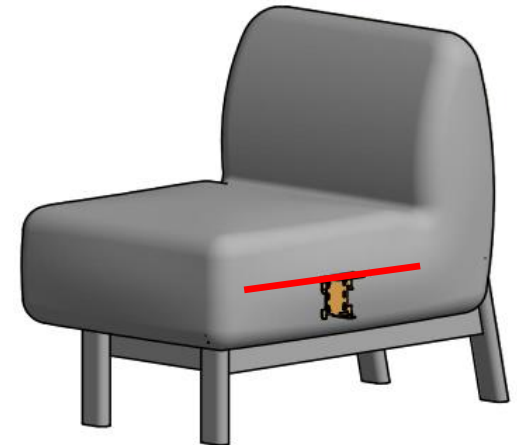
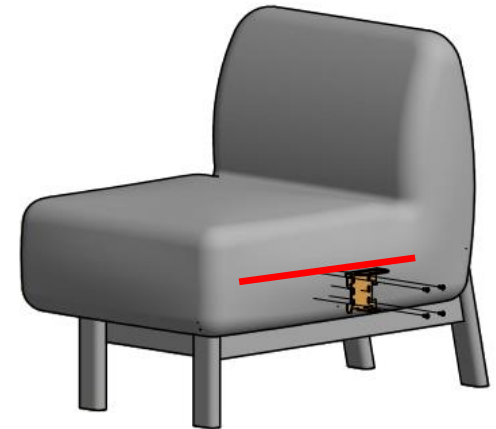
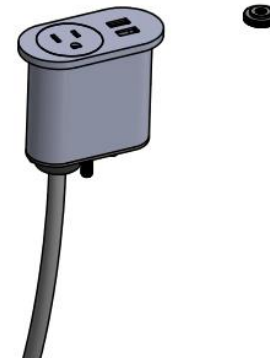


#8 x 1/2 pan head screws – 4 per

**NOTE:** all screws provided must be installed for proper installation and compliance with product warranty.

### STEP 1:

- Before attaching the attachment bracket locate where the wood frame and the set foam meet (see red line) you will be able to feel this transition. The top of the attachment bracket will need to align with the top of the frame
- The bracket can be moved forward or backwards to suit the needs of the user, **but once the screws are installed there will be permanent holes in the fabric.**
- Screw the bracket down using the provided screws. This can be done with the hand screw driver – **JSI doesn't recommend the use of a drill or power driver in the application. This will help avoid pulling threads or foam when installing.**



# CAAV

## SIDE MOUNT POWER INSTALL

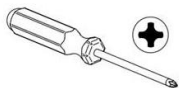
### STEP 2:

- Align tabs on cover with tabs on attachment plate
- Slide upwards until bottom tabs are touching

### STEP 3:

- Feed cord thru top of cover plate
  - Insert electrical unit into cover plate
  - Threaded stud will exit thru both tabs
  - Install thumb nut to lock in place
- 
- Installation complete

### Recommended tools



### Hardware enclosed



#8 x 1/2 pan head screws – 4 per

**NOTE: all screws provided must be installed for proper installation and compliance with product warranty.**

