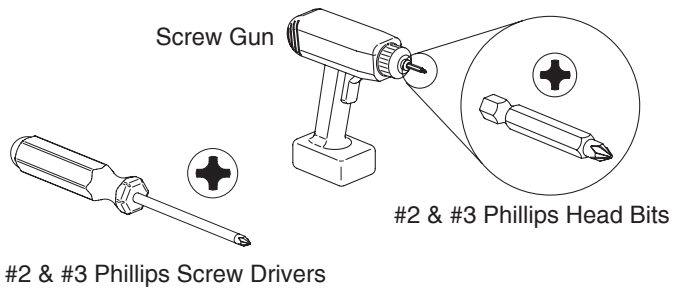
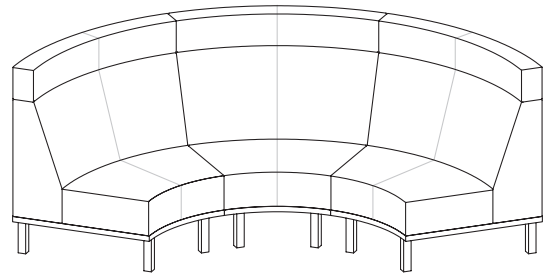


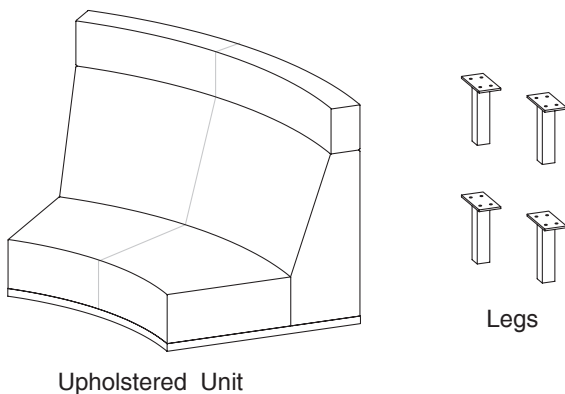
Recommended Tools



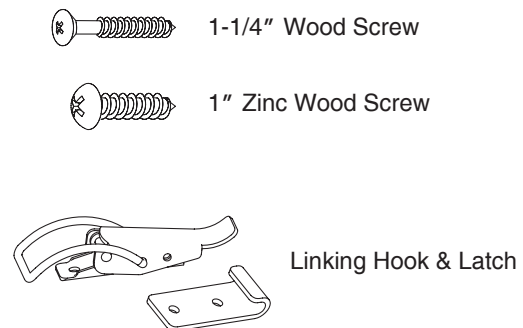
Unit Assembly



Package Contents

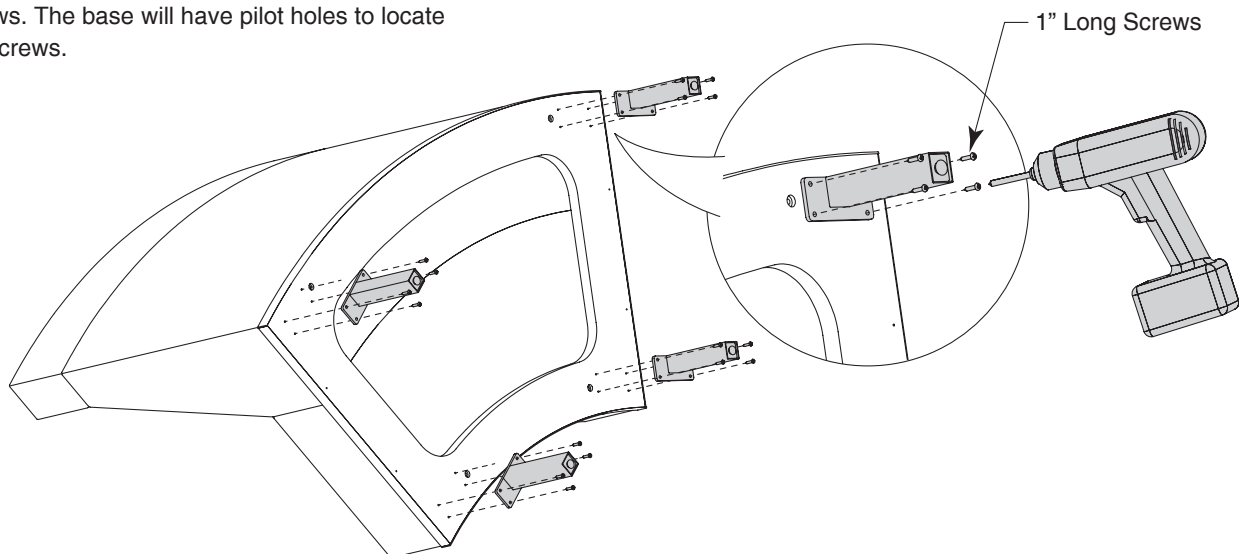


Hardware Used



Step 1

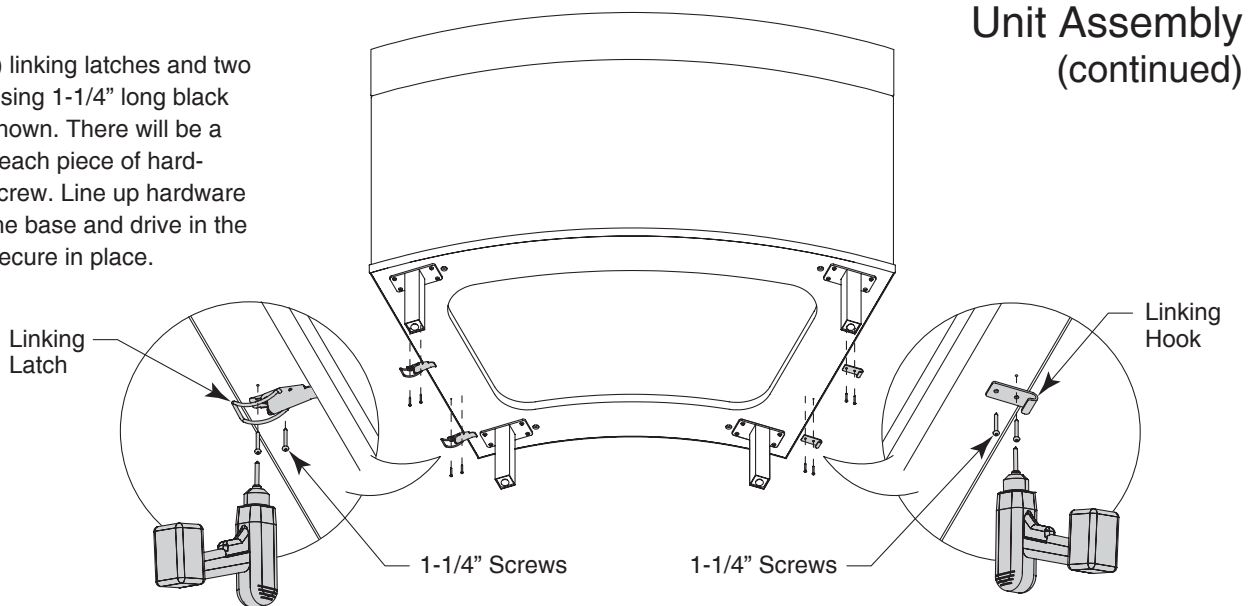
Attach the legs to the bottom of the upholstered unit using 1 inch long large wood screws. The base will have pilot holes to locate the screws.



Notice To Installers: Failure to comply with installation instructions will compromise the safety, durability and performance of this product, which may risk injury to the user of this product and/or diminish the product life cycle. Jasper Group assumes no liability in these instances.

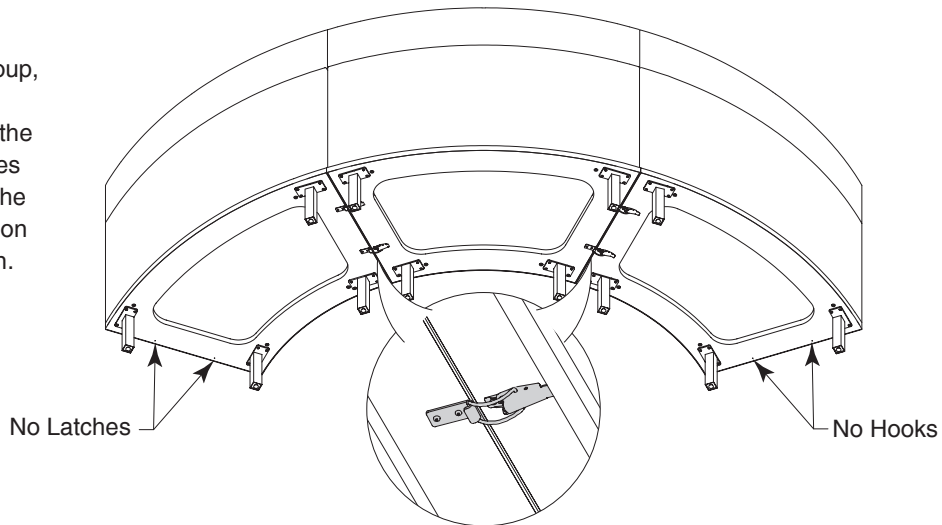
Step 2

Attach the two (2) linking latches and two (2) linking hooks using 1-1/4" long black wood screws as shown. There will be a predrilled hole for each piece of hardware for the first screw. Line up hardware perpendicular to the base and drive in the second screw to secure in place.



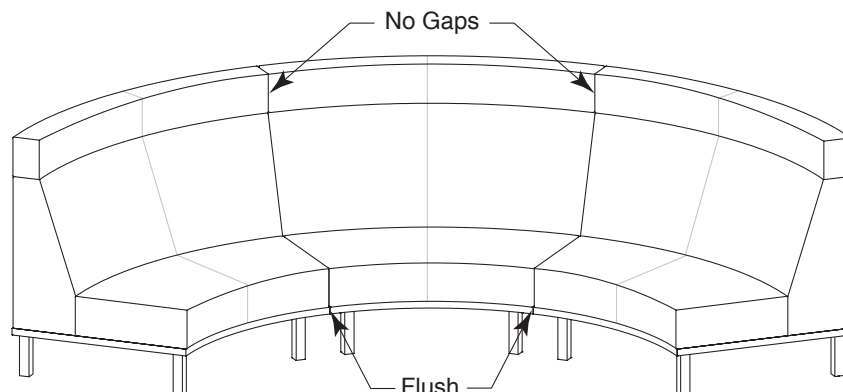
Step 3

To create the 3-piece media group, the center section will have both linking latches and hooks, while the right unit will have only the latches on the corresponding side, and the left unit will only have the hooks on the corresponding side as shown.



Step 4

Make sure to level the units so that the bases are flush and there are no gaps between the headrests.



Notice To Installers: Failure to comply with installation instructions will compromise the safety, durability and performance of this product, which may risk injury to the user of this product and/or diminish the product life cycle. Jasper Group assumes no liability in these instances.