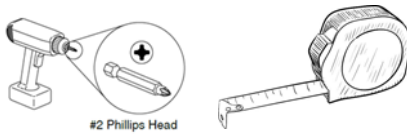


# GENERAL PRODUCT

## HOW TO ATTACH AND ASSEMBLE AN OPTIONAL MODESTY PANEL

### Recommended Tools



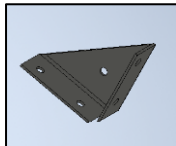
### Hardware Required



#8 x 7/8"  
PHP Screws



#8 x 5/8"  
PHP Screws



90° brackets



L-Bracket

Failure to comply with installation instructions will compromise the safety, durability and performance of this product, which may risk injury to the user of this product and/or diminish the product life cycle. Jasper Group assumes no liability in these instances.

Figure 1

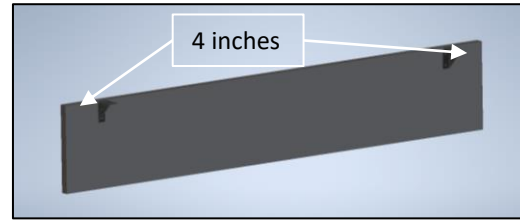


Figure 2

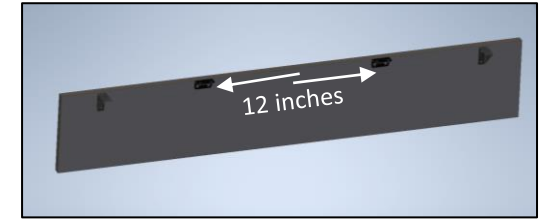


Chart 1

Top Depth	Dimension I (Inset)
24"	1.5"
30"	3"
36"	3"

1. Align the two 90° brackets to that they are flush with the top of the modesty and 4 inches inset from each end of the modesty, then secure with #8 x 5/8" screws (Figure 1)
2. Align the two L-brackets so that they are 12 inches on either side from the center, then secure with #8 x 5/8" screws (Figure 2)
3. Inset the modesty the appropriate distance from the approach side of the desk and center it side to side, then secure with #8 x 7/8" screws. Refer to Chart 1 for information on inset (Figure 3)

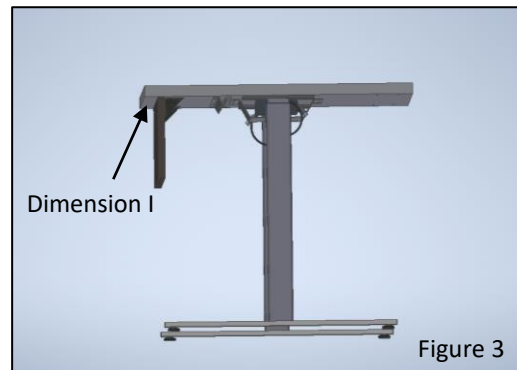


Figure 4

