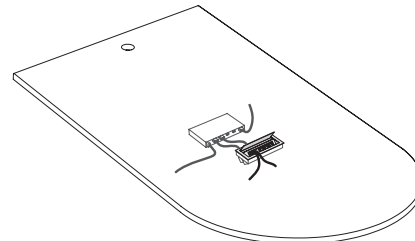


The DropShare Drop14 system has two functions. It provides 110v power outlets in the work surface and also provides cables that connect via an HDMI connection to a laptop or other portable device that allows users to share their screen on a mounted display. (An adaptor is required for devices without a HDMI port)

DropShare



Packaging

The Drop 14 system is shipped in a single carton that contains two smaller cartons.

Sub-Carton 1 :

- Qty. 1 - Ellora power and data unit
- Qty. 2 - Metal Retaining Clips
- Qty. 1 - Bag of (4) black plastic cord grommets



Ellora Unit (top view)



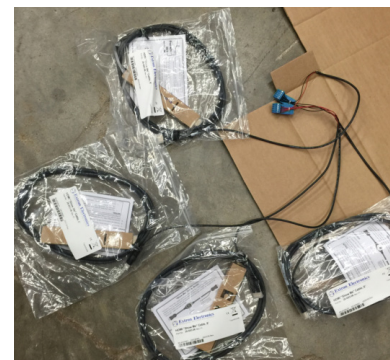
Ellora Unit (bottom view)

Sub-Carton 2:

- Qty. 1 - DropShare Harness – Consists of (4) Extron HDMI “Show Me” 6’cables (26-683-06)
- Qty. 1 - Extron HDMI Ultra 12’ Cable (26-663-12)
- Qty. 1 - Mounting Bracket Kit MBU 123 (70-212-01)
- Qty. 1 - Extron Switch Unit Carton (Carton 3)



Sub-Carton 2



DropShare Harness

Sub-Carton 3:

- Qty. 1 - SW4 HDMI Switcher
- Qty. 1 - Power Supply for Switcher
- Qty. 1 - Power Cord for Switcher
- Qty. 1 - Jumper Plug (Blue Plastic)
- Qty. 1 - Bag of (5) LockIt HDMI Cable securing bracket (blue plastic with black zip tie)
- Qty. 1 - Screw Driver



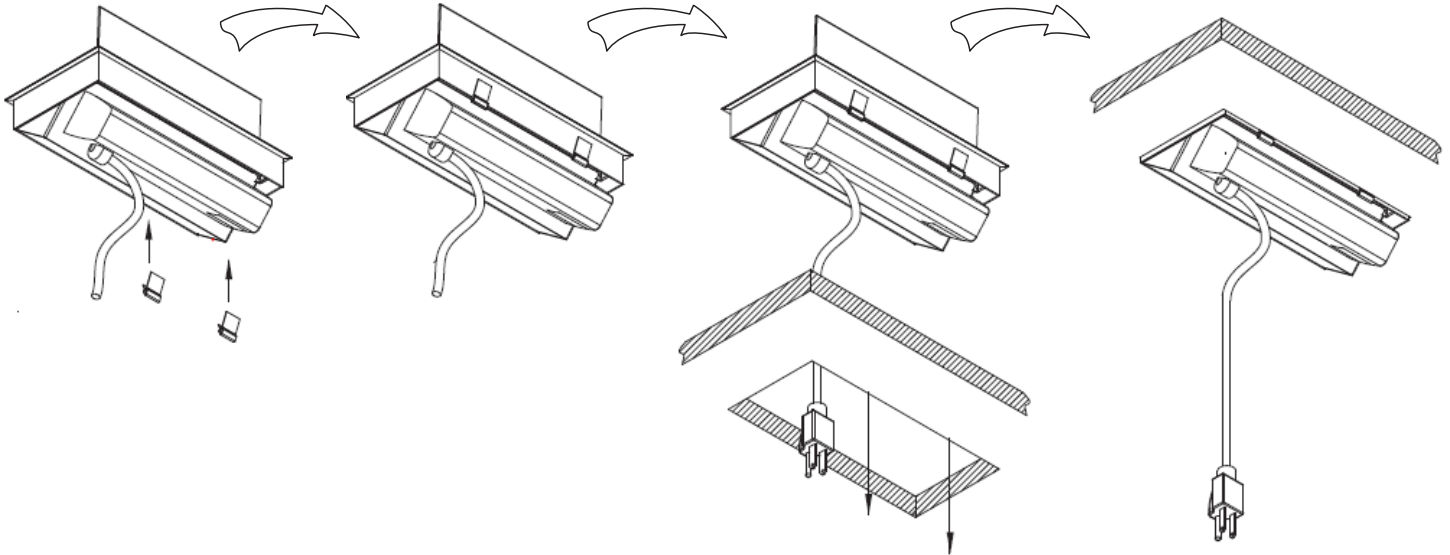
Sub-Carton 3

Notice To Installers: Failure to comply with installation instructions will compromise the safety, durability and performance of this product, which may risk injury to the user of this product and/or diminish the product life cycle. Jasper Group assumes no liability in these instances.

Step 1

Attach the metal retaining clips to the Ellora unit as shown. Feed the Ellora power cord through the work surface cutout. Insert the Ellora unit in the cutout in the work surface as shown. Do not plug the power cord in an outlet at this time.

DropShare (continued)



Step 2

Attach mounting brackets to the SW4 Switcher. Use the screwdriver provided to remove the screws from the end of the SW4 Switcher (See Fig. 2A). Align the mounting bracket with the holes and reinstall screws. (See Fig. 2B)



Figure 2A



Figure 2B

Notice To Installers: Failure to comply with installation instructions will compromise the safety, durability and performance of this product, which may risk injury to the user of this product and/or diminish the product life cycle. Jasper Group assumes no liability in these instances.

Step 3

Mount SW4 Switcher to the bottom of the work surface. Using the silver #6 x ¾" pan head screws included with the mounting bracket kit, attach the SW4 Switcher located 2" from the side of the trough rail and 3" from the back edge of the work surface. (See Fig. 3A)

DropShare
(continued)



Figure 3A

Step 4

Install the HDMI cable to SW4 Switcher and route to the television display. Plug one end of the 12' HDMI cable into the output HDMI port on the back of the Switcher. (See Figure 4A). Feed the other end of the cable through the cutout behind the back edge of the work surface and up to the round grommet hole in the upper display mounting panel. (See Figure 4B)



Figure 4A



Figure 4B

Notice To Installers: Failure to comply with installation instructions will compromise the safety, durability and performance of this product, which may risk injury to the user of this product and/or diminish the product life cycle. Jasper Group assumes no liability in these instances.

Step 5

Install the power supply for the SW4 Switcher. Route the power cord for the power supply through the grommet hole in the bottom of the back assembly as shown in Figure 5A. This can be done on the left or right side of the unit depending on location of the power outlet. Plug the power cord into the power supply. Route the power supply cord (with orange end) through the grommet into the side and out the top of the center section of back panel as shown in Figure 5B. Next insert the orange power supply plug into the SW4 Switcher as shown in Figure 5C. Do not plug the power cord into an outlet at this time.

DropShare (continued)



Figure 5A



Figure 5B



Figure 5C

Step 6

Install the DropShare Harness. The DropShare Harness consists of four Extron "Show Me" cables. Each cable has one end with an HDMI plug with two cables exiting. The other end of each cable has a push button switch and HDMI plug which are wrapped in cardboard. Do not remove the cardboard at this time. (See Figure 6A)



Figure 6A

Notice To Installers: Failure to comply with installation instructions will compromise the safety, durability and performance of this product, which may risk injury to the user of this product and/or diminish the product life cycle. Jasper Group assumes no liability in these instances.

Step 6 (continued)

Next plug the HDMI end into the SW4 Switcher as shown in Figure 6B. The order is critical. The four HDMI cables have a common blue plug with black lead wires on one end of the cable. You will need to trace the wire from position #1 back to the cable. This cable should be plugged into the HDMI port #1. Repeat the process for cables #2, #3, and #4. (See Figure 6B & 6C)

DropShare (continued)

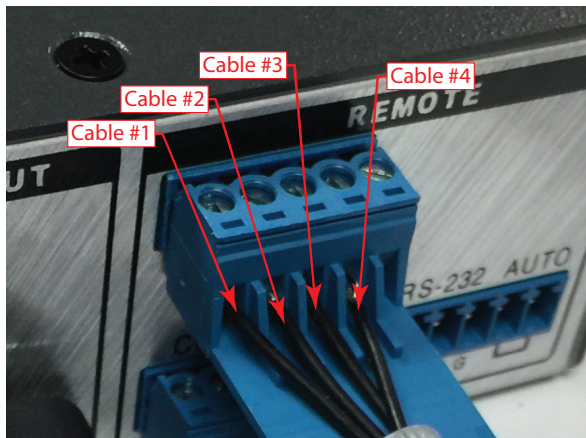


Figure 6B

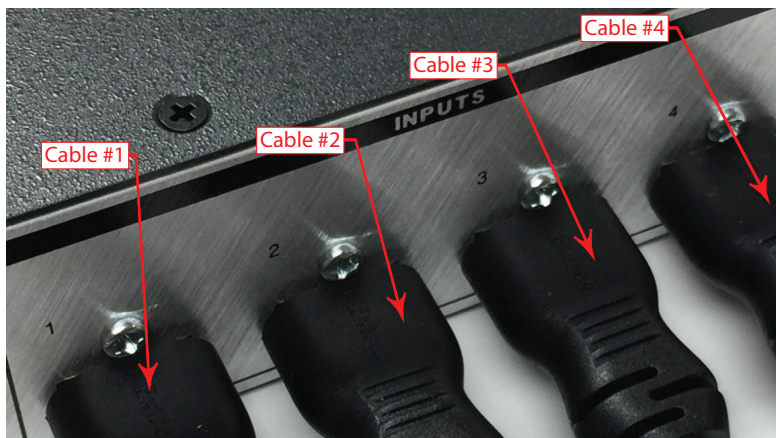


Figure 6C

Next, plug the blue connectors on the harness into the SW4 Switcher. (See Figure 6D)

IMPORTANT – The plug with black wires must plug in the upper connector. The plug with red wires connects in the lower hole.



Figure 6D

Step 7

Install the Jumper. Plug the blue plastic jumper into the connector on the far right of the SW4 Switcher as shown in Figure 7A.



Figure 7A

Notice To Installers: Failure to comply with installation instructions will compromise the safety, durability and performance of this product, which may risk injury to the user of this product and/or diminish the product life cycle. Jasper Group assumes no liability in these instances.

Step 8

Remove the cardboard cover from the other end of each of the four “Show Me” cables. See Figures 8A & 8B and route each cable through the bottom of the Ellora unit up to the work surface.

DropShare
(continued)



Figure 8A



Figure 8B

Step 9

Install cable grommets. Clip a black plastic cable grommet over each cable just behind the push button switch near the end of the cable. Slip the cable into one of the (6) cable slots in the Ellora unit. Slide the cable grommet down the cord and press it into the cable slot. This will retain the cable. (See Figures 9A & 9B)



Figure 9A



Figure 9B

Notice To Installers: Failure to comply with installation instructions will compromise the safety, durability and performance of this product, which may risk injury to the user of this product and/or diminish the product life cycle. Jasper Group assumes no liability in these instances.

Step 10

Plug the HDMI cord into the appropriate input on the television display.

DropShare
(continued)

Step 11

Plug the power cord for the Ellora and the SW4 Switcher power supply into the building power outlet. The indicators on the front of the SW4 Switcher should light up. Press the buttons on the end of each "Show Me" cable. The indicator light should switch from 1,2,3,or 4 depending on which cable is pushed.

Step 12

Test the unit. Plug the HDMI "Show Me" cables into two lap top computers. Push the button on the cord of the first computer. The button should light and the screen will display the data from that computer. Press the button for the second computer. The push button should light and the display should switch to show the data from the second computer.

Step 13

Secure HDMI cables. The HDMI cables should be secured using the LockIt brackets and zip-ties to prevent them from being pulled loose during use. Loosen the screw just above the HDMI port on the back of the SW4 Switcher. Slide the Lockit bracket in behind the screw and tighten. Use the zip-tie to secure the cable to the bracket. (See Figure 13A)



Figure 13A

Step 14

The final step is to install the bottom panel on the trough area below the DropShare unit. Install the 1/4" thick bottom using thumb screws. Make sure all wire are concealed neatly and are not pinched. (See Figure 14A)



Figure 14A

Notice To Installers: Failure to comply with installation instructions will compromise the safety, durability and performance of this product, which may risk injury to the user of this product and/or diminish the product life cycle. Jasper Group assumes no liability in these instances.