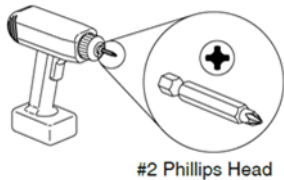


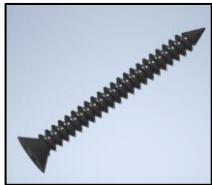
MOTO

ASSEMBLING A CONICAL BASE WORK TABLE

Recommended Tools



Hardware Needed



#10 X 1-1/4" FHP Screws

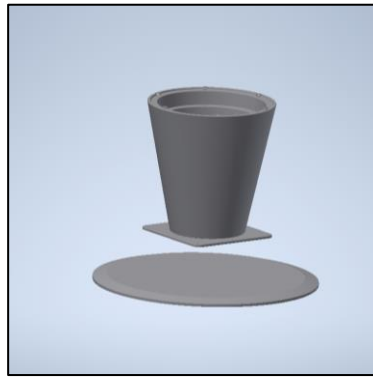
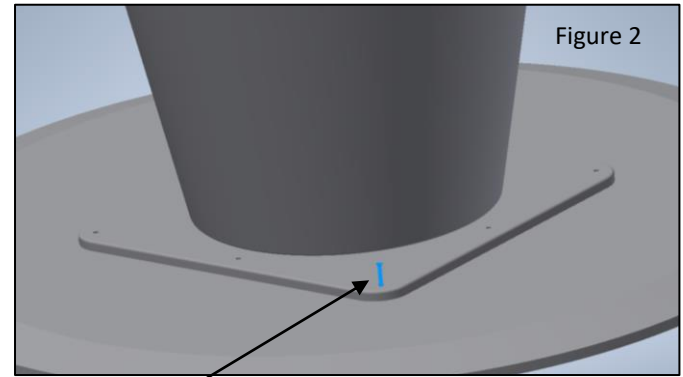


Figure 1



#10 X 1-1/4"

1. Lay the top panel on a nonmarring surface (Figure 1)
2. Place the base on the top and align the holes with the pilot holes in the top, then secure with the screws provided (Figure 2)

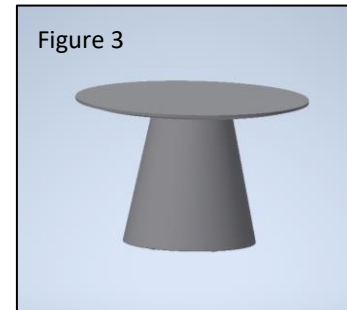


Figure 3

Failure to comply with installation instructions will compromise the safety, durability and performance of this product, which may risk injury to the user of this product and/or diminish the product life cycle. Jasper Group assumes no liability in these instances.