

JSI

COATED SOLUTIONS - VINYL



SPRADLING®

MAGLIA™ | EDGELINE™

SILVERTEX™ NEO | WHISPER™ NEO

Contract Collection

MAGLIA™ | ecoSense™



MAG-1951
DESERT



MAG-1953
VANILLA



MAG-1954
SAGE



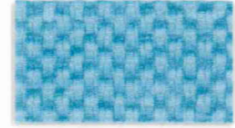
MAG-1955
VIRIDIAN



MAG-1956
AEGEAN



MAG-1957
SKY



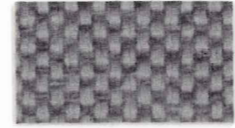
MAG-1958
AQUA



MAG-1952
SAPPHIRE



MAG-1959
INDIGO



MAG-1960
WISTERIA



MAG-1961
GOLDENROD



MAG-1962
CLAY



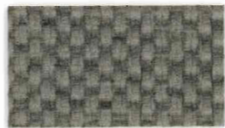
MAG-1963
CORAL



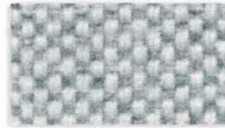
MAG-1964
ROSE



MAG-1965
DRIFTWOOD



MAG-1966
TRUFFLE



MAG-1967
ALASKA



MAG-1968
THUNDER

NOW!

EDGE LINE™ | ecoSense™

NOW!



EDG-1852
PEACOCK



EDG-1853
CLOVER



EDG-1854
EMERALD



EDG-1855
STORM



EDG-1856
OLIVE



EDG-1857
ATLANTIC



EDG-1858
ROYAL



EDG-1859
MIDNIGHT



EDG-1860
AUBERGINE



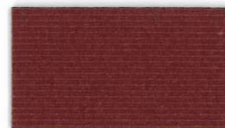
EDG-1861
RUBY



EDG-1862
AUTUMN



EDG-1863
SANGRIA



EDG-1864
CRIMSON



EDG-1865
LATTE



EDG-1866
JASPER



EDG-1867
MUSTARD



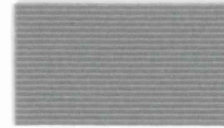
EDG-1868
CARAMEL



EDG-1869
ESPRESSO



EDG-1851
FULLMOON



EDG-1870
PEWTER

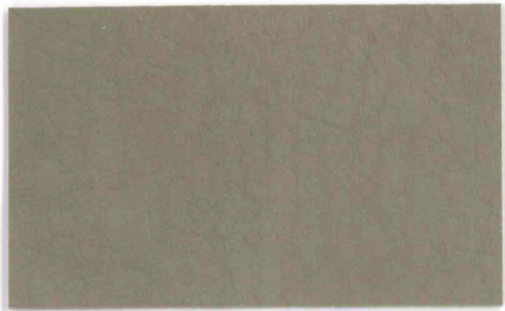


EDG-1871
GRAPHITE



EDG-1872
CHARCOAL

WHISPER™ NEO



WHI-2150
FAWN



WHI-2117
BONE



WHI-2141
CASHEW



WHI-2121
CAPPUCCINO



WHI-2120
ANTELOPE



WHI-2138
ELEPHANT

NOW!



WHI-2155
STORM



WHI-2143
ESPRESSO



WHI-2118
CAMEL



WHI-2142
COGNAC



WHI-2123
LUGGAGE



WHI-2165
MOLTEN



WHI-2129
FOREST



WHI-2162
PARADISE



WHI-2136
CERULEAN



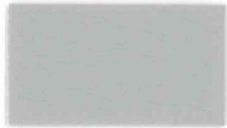
WHI-2163
INDIGO



WHI-2137
NAVY



WHI-2134
PATINA



WHI-2157
FOG



WHI-2154
PEWTER

NOW!



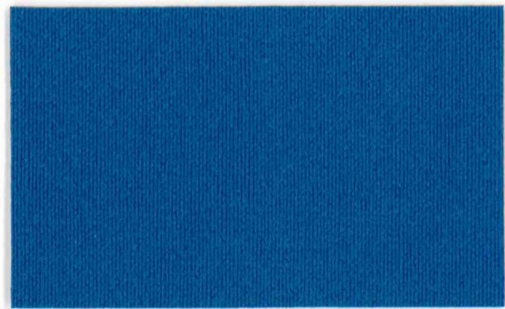
WHI-2139
CHARCOAL



WHI-2140
BLACK

NOW!

SILVERTEX™ NEO



STX-8801
MARINE BLUE



STX-8823
CARBON

NOW!



STX-8805
JET



STX-8804
SAPPHIRE

NOW!



STX-8822
STORM



STX-8803
TURQUOISE



STX-8802
LAGOON



STX-8840
STERLING

NOW!



STX-8839
PLATA



STX-8809
TAUPE



STX-8808
CHAMPAGNE



STX-8818
SAGE



STX-8819
CELERY



STX-8834
ACID



STX-8833
CRÈME DE MENTHE



STX-8820
BASIL



STX-8842
LIMONCELLO



STX-8811
MANDARIN



STX-8837
BAZAAR



STX-8817
BLACKBERRY



STX-8824
METEOR



STX-8825
MOCHA

COMPOSITION	Maglia	Edgeline	Silvertex	Whisper
Vinyl Urethane Topcoat	•	•	•	•
Hi-Loft ^{2TM} 100% Polyester	•		•	•
Nylon		•		
Weight (oz.)	30	31	30	27
Roll Size (yd.)	30	30	30	30
Roll Width (in.)	54	54	54	54

FINISHES	MAG	EDG	STX	WHI
PERMABLOK[®] ADVANCED VINYL PROTECTION	•	•	•	
NAPA				•

FIRE CODES	MAG	EDG	STX	WHI
California T.B. 117 - 2013	•	•	•	•
NFPA 260 - Class I	•	•	•	•
UFAC - Class I	•	•	•	•

CHARACTERISTICS	MAG	EDG	STX	WHI
Stain Resistant	•	•	•	
No Heavy Metals	•	•	•	•
Formaldehyde Free	•	•	•	•
No Phtalates	•	•		
No Flame Retardants	•	•	•	•
No Biocides	•	•		•
Prop 65 Compliant	•	•	•	•
eco^{ense} certified	•	•		

PERFORMANCE	MAG	EDG	STX	WHI
Superior Abrasion CFFA 1-a / ASTM D-4157	100K	100K	100K	100K
UV Stability Xenotest: AATCC TM 16-3/ NTC 1479 / CFFA-2 a1 - 1,000 Hours	•	•	•	•
Cold Crack CFFA-6-a	-10°F	-10°F	-10°F	-20°F
Crocking Resistance CFFA-7 ATCC TM 8: Pass	•	•	•	•
Antibacterial AATCC TM 147			•	
Antistatic ASTM D-257	•	•	•	•
Mildew Resistant ASTM G21			•	

APPLICATIONS	MAG	EDG	STX	WHI
Automotive RV				
Education	•	•	•	•
Healthcare	•	•	•	•
Office	•	•	•	•
Hotel Motel Casino	•	•	•	•
Restaurant	•	•	•	•
Theaters Convention Centers	•	•	•	•
Marine Interior	•	•	•	•
Marine Exterior			•	
Residential Interior	•	•	•	•
Residential Exterior			•	

PERMABLOK[®] Care and Cleaning Guide

STEP 1: Common stains: eye shadow, mascara, grease, black felt tip pen, crayon, chocolate, suntan lotion and hair/body oils*
Remove excess spill with a damp cloth. Use a 1:1 mix of Ivory[®] liquid soap and water. Rub gently with a soft clean cloth, rinse with clean water and dry.

STEP 2: Common stains: red lipstick
Use a straight application of concentrated cleaners such as Formula 409[®] or Fantastik[®] spray cleaner. Rub gently with a soft clean cloth, rinse with clean water and dry.

STEP 3: Common stains: blood, urine, feces, and oil-based paint
Use a 1:1 mix of ammonia and water or a 1:10 mix of bleach and water. Rub gently with a soft clean cloth, rinse with clean water and dry.

STEP 4: All other tough stains
Use a cotton cloth saturated in a 1:1 mix of isopropyl alcohol and water. Rub gently in a circular motion 10 times. Pat dry and check the results. If the stain persists, use straight alcohol and rub the stain again using the circular motion. Rinse thoroughly with clean water and pat dry.

*Must be cleaned after each instance of exposure to hair and body oils.

The information published in this care guide refers to the performance of PERMABLOK[®] products in specific tests conducted under laboratory conditions. Results may vary under actual conditions.

NAPA[™] Care and Cleaning Guide

STEP 1: Light soiling
Remove excess spill with damp cloth. Use a solution of 10% household dish soap in warm water. Rub gently with a soft clean cloth, rinse with clean water and dry.

STEP 2: Heavy Soiling
Dampen a soft white cloth with a one-to-one (1:1) solution of warm water and an approved cleaner, such as Formula 409[®] or Fantastik[®]. Rub gently, rinse with a clean water-dampened cloth and dry.

STEP 3: More difficult stains
Dampen a soft white cloth with a solution of 10% household bleach and warm water. Rub gently, rinse with a clean water-dampened cloth to remove bleach concentration and dry.

* Do not use with alcohol-based cleaning agents.

This information is not a guarantee and does not relieve the user from the responsibility of the proper and safe use of the product and all cleaning agents. The use of certain agents can be harmful to the surface appearance and lifespan of vinyl. Spradling, its agents, and assigns assume no responsibility resulting from the use of such cleaning agents to the vinyl.

Certain clothing and accessory dyes (such as those used on denim jeans) may migrate to lighter colors. This phenomenon is increased by humidity and temperature and is irreversible. Please check compatibility when using this product in combination with painted or varnished surfaces.

PERMABLOK[®] is a registered trademark of Spradling Holdings, Inc.
Ivory[®] is a registered trademark of The Procter and Gamble Company.
Formula 409[®] is a registered trademark of The Clorox Company.
Fantastik[®] is a registered trademark of S.C. Johnson & Son, Inc.

Spradling International is not sponsored by, affiliated with, or endorsed by such trademark owners. Additionally, any use by Spradling International of any third-party trademark does not constitute any endorsement by Spradling International of such third party.



Scan for current textile grades



225 Clay Street
Jasper, Indiana 47547

800.622.5661 TOLL
812.482.3204 OFFICE
812.482.1548 FAX

JASPERGROUP.US.COM

Issued in 2020
Please notice patterns, pricing, information and availability are subject to change
Contact Jasper Group or fabric supplier for verification if issue date is beyond three years

JSI.SP.CSV.0120.2000



SPRADLING INTERNATIONAL
Corporate Headquarters
200 CAHABA VALLEY PARKWAY
P.O. BOX 1668 | PELHAM, AL 35124
PHONE 800-333-0955
FAX 205-985-2354 | 205-985-9176
EMAIL sales@spradlinggroup.com
SPRADLINGVINYL.COM

USA LOCATIONS
Pelham, Alabama
La Mirada, California
Grand Rapids, Michigan
Westampton, New Jersey
Maryville, Tennessee

INTERNATIONAL LOCATION
Europe (Spain | UK | Germany)
Mexico