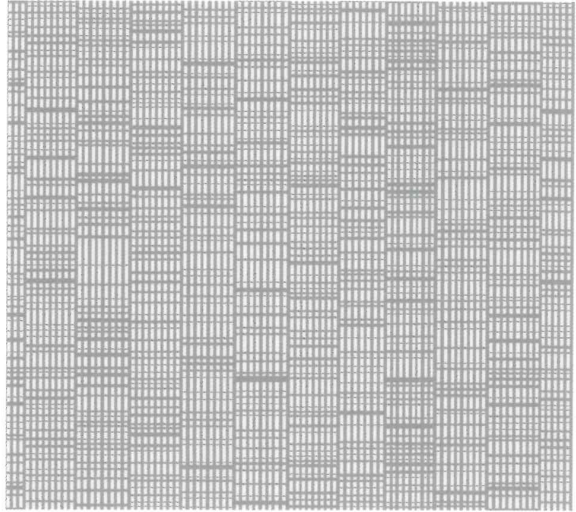
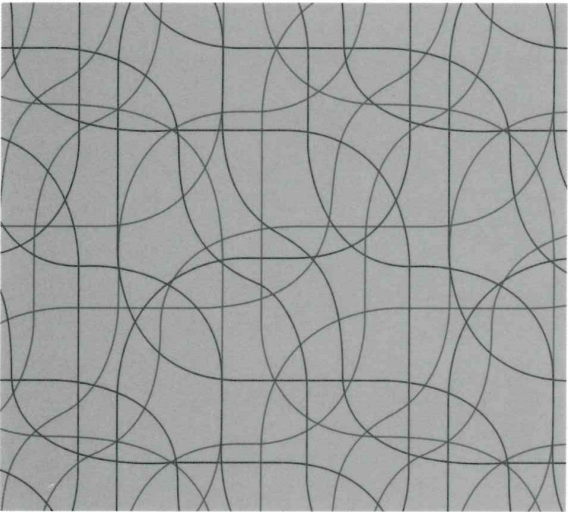


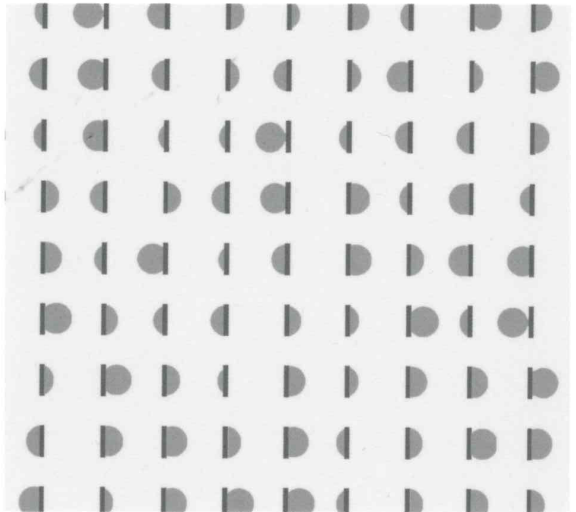
Caper



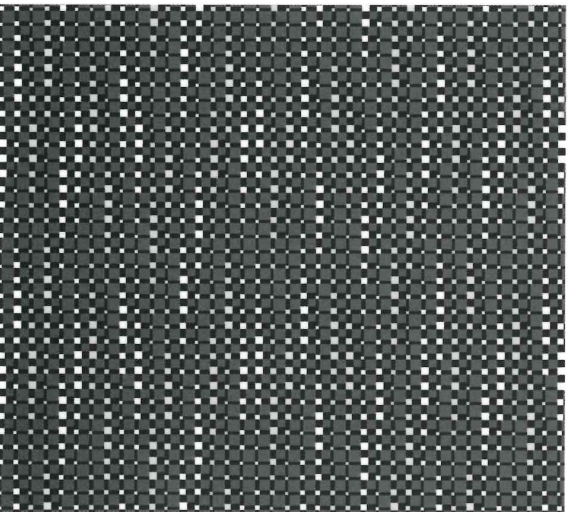
Conduit



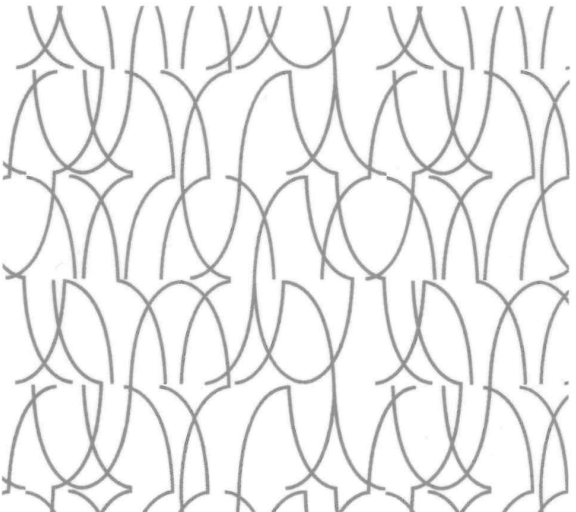
Loop



Lunar

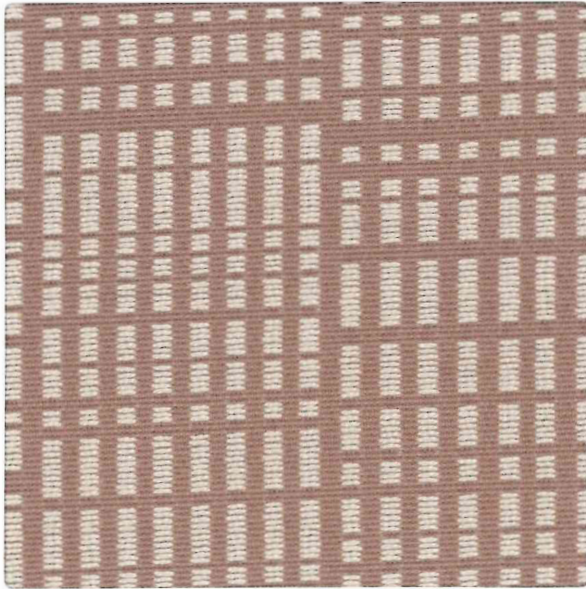


Multiply



Spry

Images not to scale



Conduit, 005 Fawn



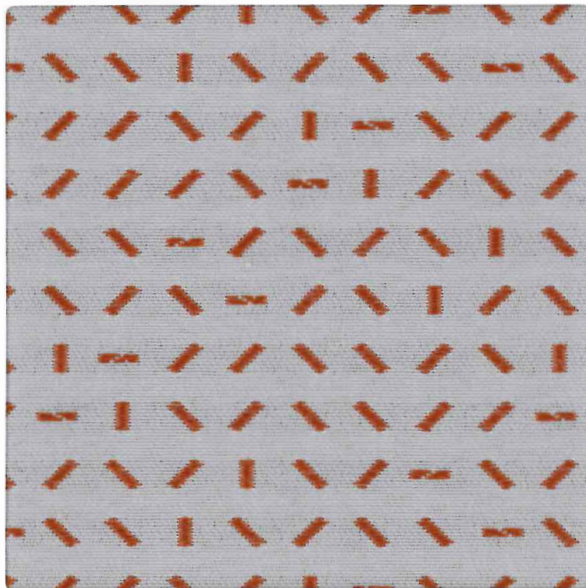
Multiply, 002 Encore



Brindle, 001 Calico



Keen, 004 Oatmeal



Trundle, 002 Element



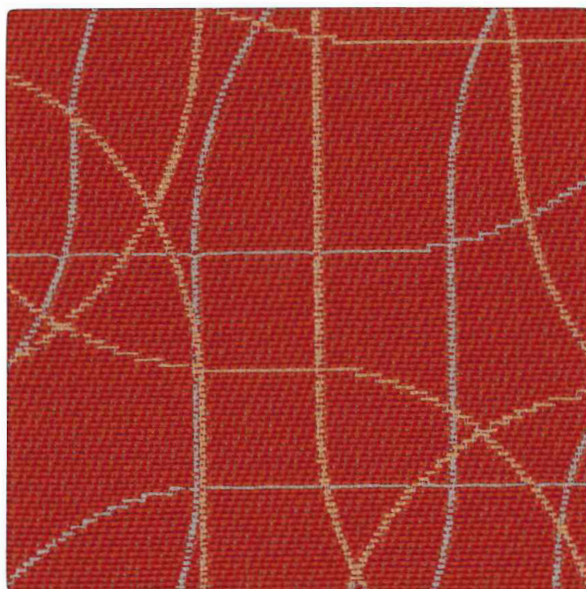
Brindle, 003 Torch



Lunar, 002 Jingle



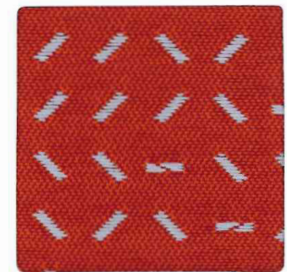
Caper, 006 Note



Loop, 008 Wildfire



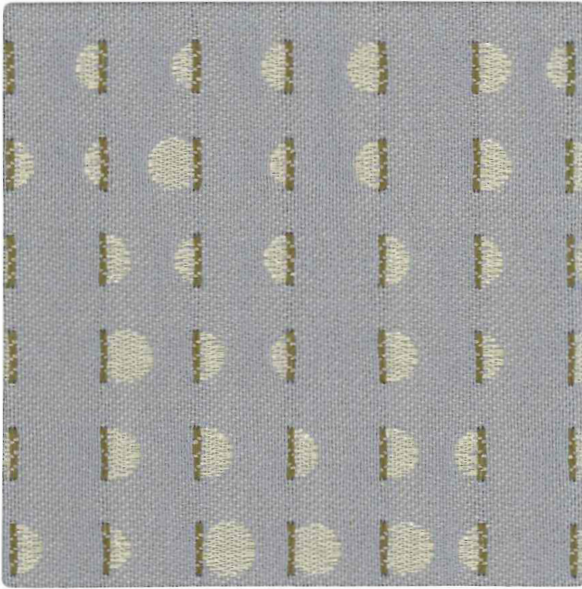
Spry, 006 Jam



Trundle, 011 Magnet



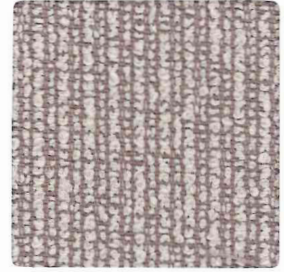
Keen, 002 Lock



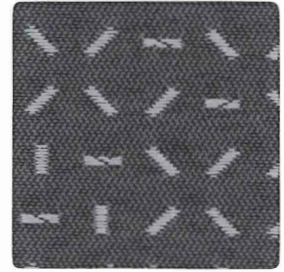
Lunar, 005 Grace



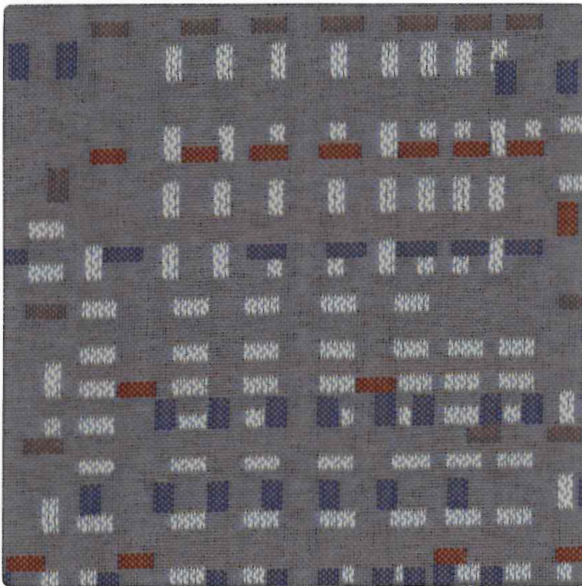
Loop, 003 Naval



Wend, 002 Tulle



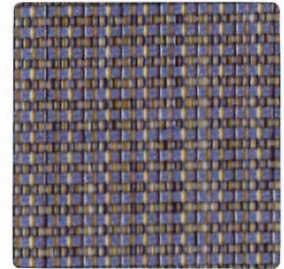
Trundle, 003 Ray



Caper, 007 Silverback



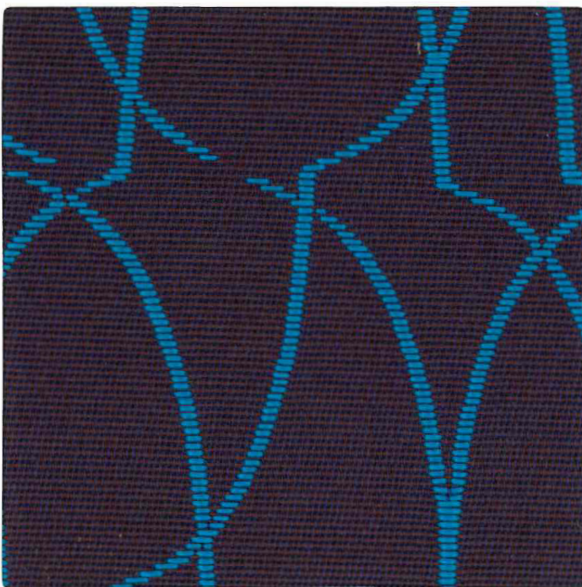
Conduit, 008 Canal



Brindle, 012 Aquarium



Lunar, 004 Code



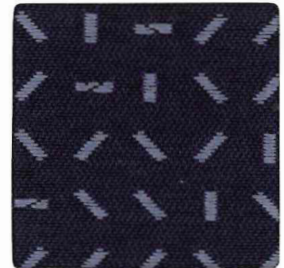
Spry, 007 Trance



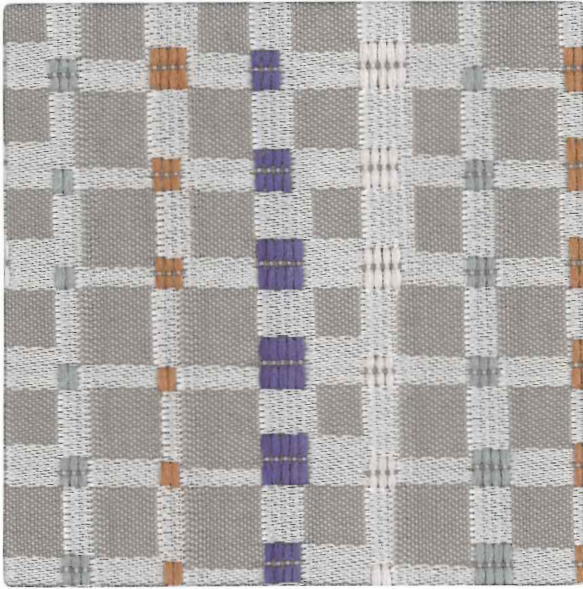
Multiply, 010 Deep



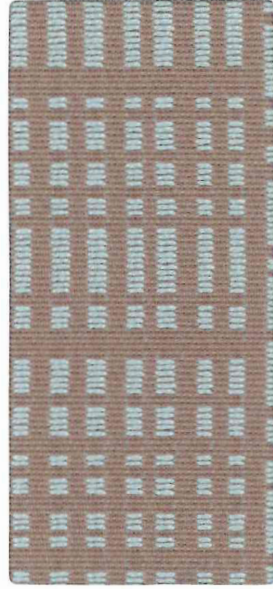
Wend, 010 Sigma



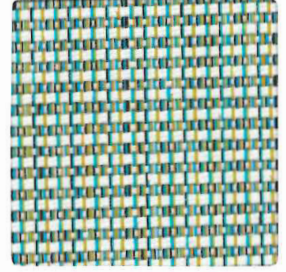
Trundle, 008 Wake



Multiply, 006 Daze



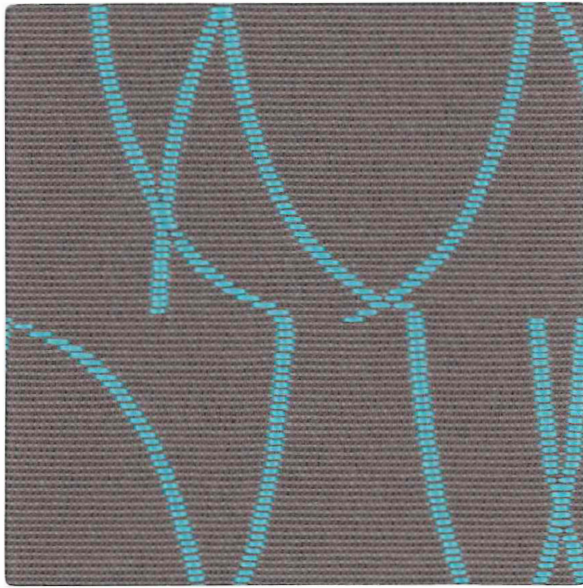
Conduit, 007 Caribbean



Brindle, 009 Inland



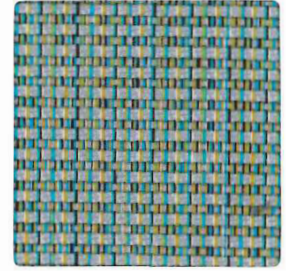
Keen, 007 Coyote



Spry, 003 Fizz



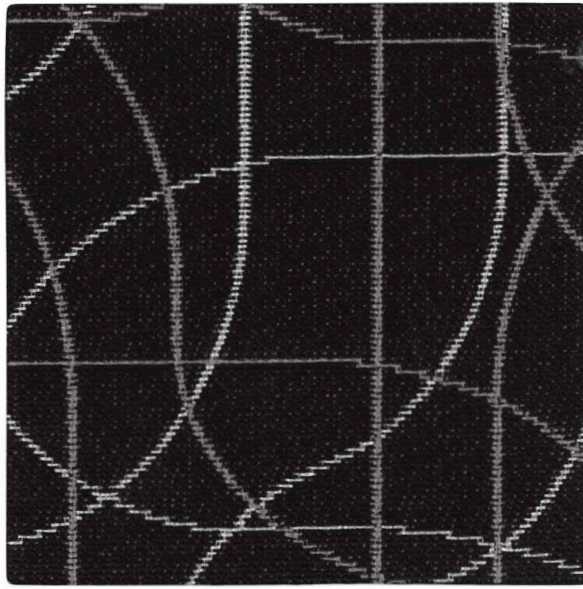
Trundle, 005 Aloe



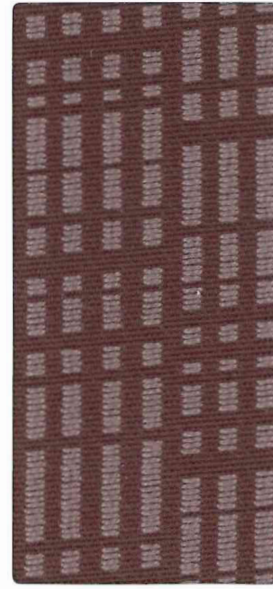
Brindle, 010 Seagrass



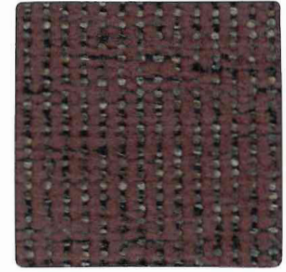
Wend, 011 Riverfront



Loop, 010 Penguin



Conduit, 003 Nimbus



Keen, 001 Gaur



Wend, 008 Midi

**Brindle
466418**

Content: 100% Polyester
Finish/Backing: PFOA-Free Stain Resistant, Acrylic
Width: 58"
Abrasion: 100,000 double rubs

**Caper
466384**

Content: 100% Post-Consumer Recycled Polyester
Finish/Backing: PFOA-Free Stain Resistant, Acrylic
Width: 54"
Repeat: 15" V, 14 1/4" H,
Suitable for non-match application
Abrasion: 90,000 double rubs



**Conduit
466428**

Content: 100% Polyester
Finish/Backing: PFOA-Free Stain Resistant, Acrylic
Width: 58"
Repeat: 11 1/4" V, 14 1/2" H,
Suitable for non-match application
Abrasion: 100,000 double rubs



JSIFURNITURE.COM

225 Clay Street
Jasper, Indiana 47546

800.622.5661 TOLL
812.482.3204 OFFICE
812.482.1548 FAX

**Keen
466433**

Content: 61% Polyester, 39% Polyolefin
Finish/Backing: PFOA-Free Stain Resistant, Acrylic
Width: 54"
Abrasion: 100,000 double rubs

**Loop
466469**

Content: 48% Post-Industrial Recycled Polyester, 26% Post-Consumer Recycled Polyester, 26% Polyester
Finish/Backing: PFOA-Free Stain Resistant, Acrylic
Width: 57"
Repeat: 4 3/4" V, 4 3/4" H,
Suitable for non-match application
Abrasion: 100,000 double rubs

**Lunar
466356**

Content: 57% Post-Industrial Recycled Polyester, 43% Post-Consumer Recycled Polyester
Finish/Backing: PFOA-Free Stain Resistant, Acrylic
Width: 57"
Repeat: 6 1/2" V, 7 1/2" H
Railroaded Repeat (shown):
7 1/2" V, 6 1/2" H
Abrasion: 80,000 double rubs



**Multipl
466341**

Content: 57% Post-Consumer Recycled Polyester, 43% Post-Industrial Recycled Polyester
Finish/Backing: PFOA-Free Stain Resistant, Acrylic
Width: 58"
Repeat: 14" V, 7 1/4" H
Railroaded Repeat (shown):
7 1/4" V, 14" H
Abrasion: 60,000 double rubs



**Spry
466414**

Content: 100% Polyester
Finish/Backing: PFOA-Free Stain Resistant, Acrylic
Width: 54"
Repeat: 6 1/4" V, 7 1/4" H,
Suitable for non-match application
Abrasion: 80,000 double rubs

**Trundle
466434**

Content: 59% Post-Industrial Recycled Polyester, 41% Post-Consumer Recycled Polyester
Finish/Backing: PFOA-Free Stain Resistant, Acrylic
Width: 54"
Repeat: 2 1/4" V, 2 1/2" H,
Suitable for non-match application
Abrasion: 95,000 double rubs



**Wend
466381**

Content: 50% Polyester, 32% Post-Industrial Recycled Polyester, 18% Post-Consumer Recycled Polyester
Finish: PFOA-Free Stain Resistant
Width: 57"
Abrasion: 75,000 double rubs

Design
Maharam Design Studio

Flammability
These textiles meet all appropriate flammability requirements for contract use.

Quick Ship
All patterns and colors on this card are available on the JSI Quickship program.

Maintenance and Samples
Call 800.645.3943 or visit maharam.com

Environmental
These textiles offer reduced environmental impact.

Complete product information at maharam.com

© 2019 Maharam



scan for current textile grades